

SUGAR RAY

A Smart Pole Camera

For thirty years Law Enforcement has been putting cameras in transformers mounted on telephone poles—huge transformer cans with forty pounds of camera and link equipment. They cost a fortune and require specialists to install. No longer.

Sugar Ray is about the size of two shoe boxes. It has a camera with an onboard processor, that selects its targets and stores the video. It installs in minutes and does not connect to existing power. It operates multiple days on a single battery and offers day and night operation. SR is wireless. Imagery departs the camera through cell phone or WiFi transmitters. Users retrieve imagery by connecting with the camera and pulling out stored data.

The camera is smart. Users select target size, direction of travel, and region of interest. CMOS technology creates a battery-friendly environment. Processor options permit text message alerts and email attachment capability.



Common enclosure allows placement almost anywhere.

FullBlast Technologies Inc.
19420 65th Ave. NE
Kenmore, WA. 98028
425 273 5886
www.fullblasttech.com

SUGAR RAY

Specifications

Physical

Dimensions: 14 H x 12 W x 7 D inches
Weight: 7.5 lbs
Color: Beige

Power

Voltage: 12 VDC
Current: 1.0 – 1.5 Amp
Battery Run Time: 10 hrs Continuous

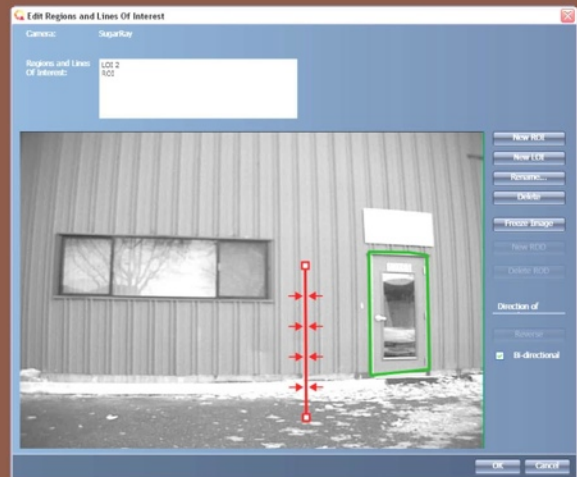
Performance

Digital Video Format: H.264 or MPEG-4
Analog Video Format: NTSC or PAL
Video Resolution: 704 x 480 pixels
Frame Rate: Up to 30 FPS All Resolutions
Encoding: Selectable – High Quality for Alarms and Lower Quality for Continuous Recording
Imaging Modes: Day & Night with Auto Iris
Storage Capacity: 80 or 160 GB
Link Options: Ethernet, WiFi, or Cellular Modem
Video Analytics: Loitering & Dwell Times
Direction of Travel
Fence Line & Perimeter Crossing
Size & Shape Detection
Crowd Detection
Audio: Capable

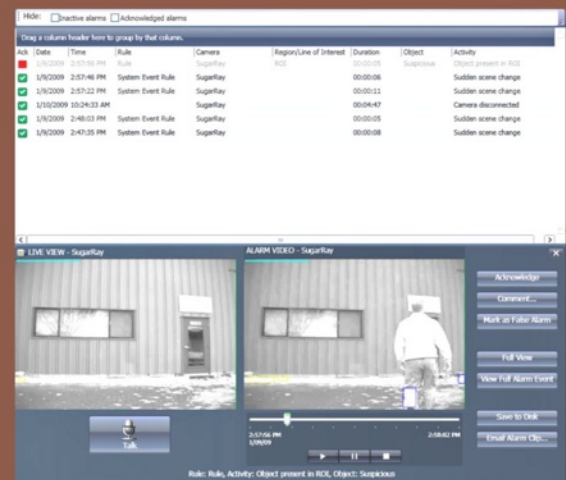
Software System Requirements

Operating System: Windows XP or Vista
CPU: Core-2 Duo 2.0 Ghz
RAM: 2 GB

The system configuration described and depicted herein is the exclusive property of FullBlast Technologies and NW Stealth. Any use of this configuration without prior consent of FBT or NWS is prohibited.
Patent Pending.



Easily configure alarm triggers, such as trip wires and areas.



Review and acknowledge alarm events.

FullBlast Technologies Inc.
19420 65th Ave NE
Kenmore, WA. 98028
425 273 5886
www.fullblasttech.com

Interdiction, Obfuscation and Skullduggery